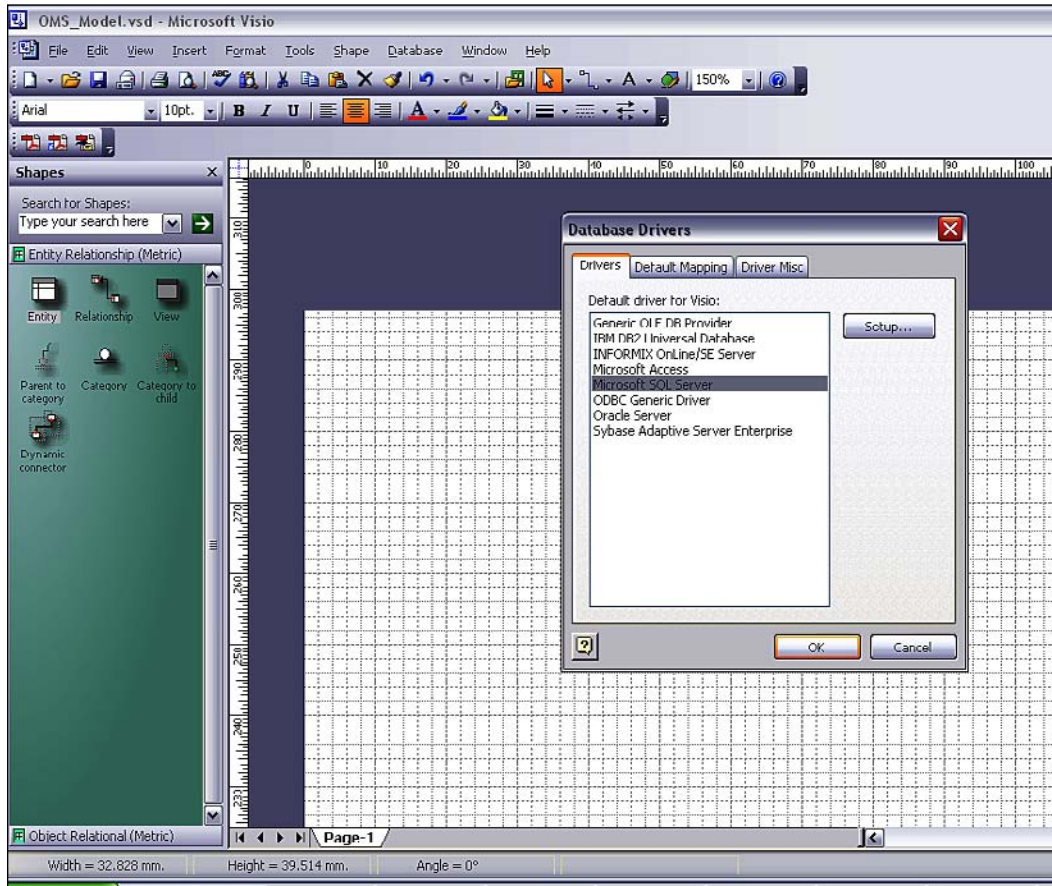



3. Select **Microsoft SQL Server** from the Database Drivers window and click **OK**, as shown in the following screenshot:



Now we will create the database tables based on the logical data model we created earlier. On the left side, you will see the **Shapes** pane, as shown below:



 If the Shapes pane is not visible, go to the top menu, select **View** and then select **Shapes** from the sub-menu.

The **Shapes** window has the most common shapes used to represent the entities we will use in our physical data model. We will only use the basic shapes, such as the **Entity** shape to represent an actual table in the database, and the **Relationship** shape to create relationships between the two entities.